

# MYSTIC MOMENTS

## CERTIFICATE OF ANALYSIS

Product Code            OFCHER  
Product Name            CHERRY  
Batch Number            4504004  
Best Before Date: April 2026

Odour                    CHARACTERISTIC  
Appearance            CLEAR TO VERY PALE YELLOW  
                              Appearance may change with age and storage conditions  
S.G.@ 20 degC            0.9602  
R.I.@ 20 degC            1.4816  
Overall Status            PASS

24/05/2021

## ALLERGEN DECLARATION

We hereby confirm that the following item contains the ingredients listed below. Stated are the total levels added plus levels from natural ingredients. The information is supplied to enable compliance with the EU Cosmetics Regulation (1223/2009/EC) and the EU Detergents Directive (648/2004/EC).

### CHERRY

Ingredient	CAS	EC	Concentration (%)
Citral	5392-40-5	226-394-6	0.0205%
Eugenol	97-53-0	202-589-1	2.7%
Limonene	5989-27-5, 138-86-3, 5989-54-8	205-341-0, 227-813-5, 227-815-6	2.5902%
Linalool	78-70-6	201-134-4	11.5014%

Disclosure limit for allergens is one ppm.

**Regulatory Affairs Department**

# MYSTIC MOMENTS

## Declaration regarding Carcinogenic, Mutagenic or Toxic for Reproduction materials

This statement is to certify that the fragrance(s) listed below;

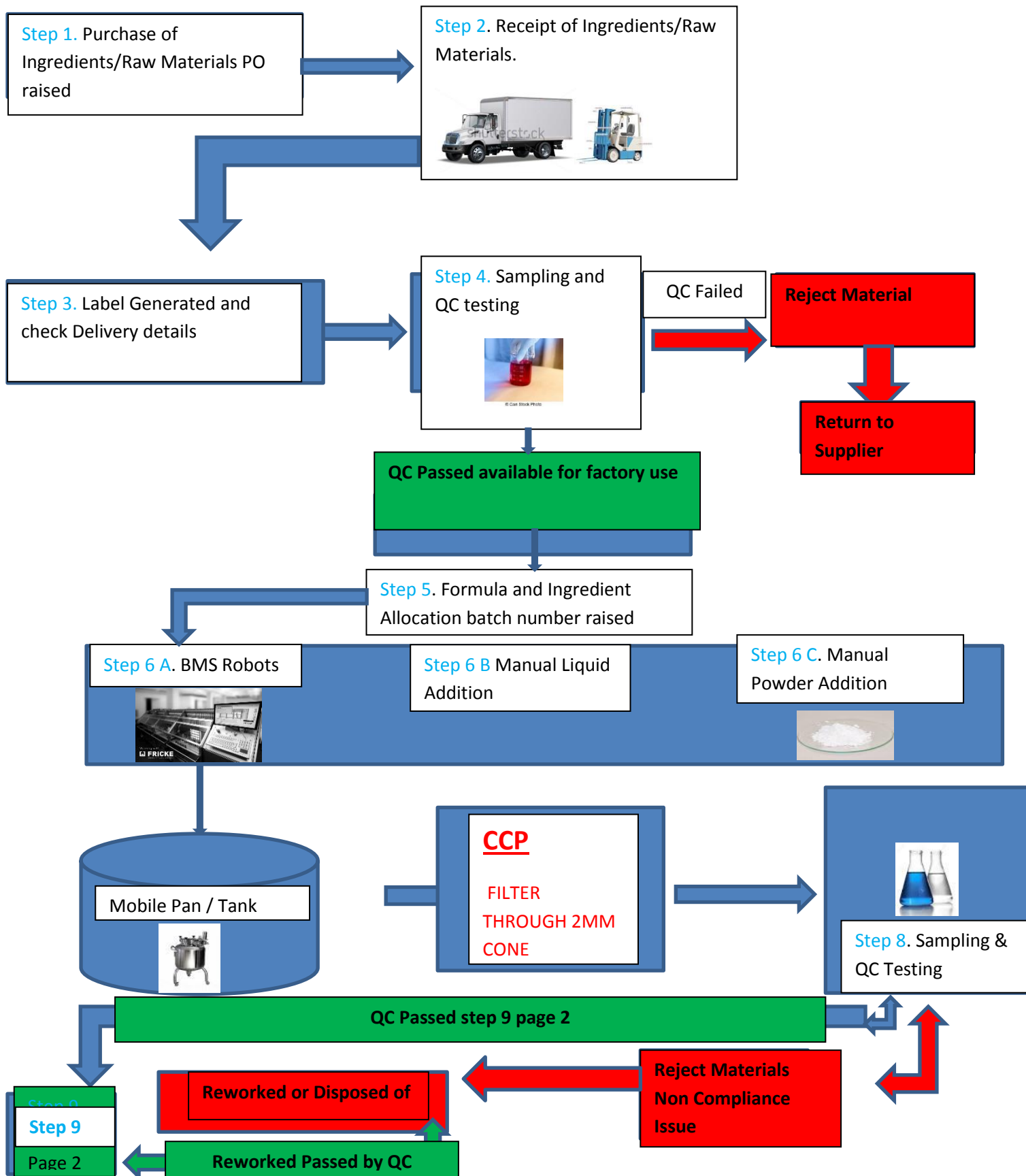
Cherry Fragrance Oil

Does not contain materials that are Carcinogenic, Mutagenic or Toxic for Reproduction.

Date: 04.06.2021

# MYSTIC MOMENTS

HACCP EFF Flow Chart Page 1



Step 9. Product Filled  
in Labelled finished  
pack



Step 10. Check batch  
Label V's Shipping Label  
Verification.



Step 11. Despatch  
document and



## STEP GUIDE

### Step Guide

- Step 1.** Ingredients are purchased using approved suppliers. Po can only be raised by authorised staff.
- Step 2.** Ingredients are unloaded and goods checked vs. delivery Note.
- Step 3.** Using Purchase ref labels are generated and delivery details recorded on local data base.
- Step 4.** All containers are sampled and submitted to QC for testing status change when passed and labelled.
- Step 5.** Order quantity is entered on Formpak to generate manufacturing batch form. Manufacture is assigned planning slot on spreadsheet.
- Step 6.** Product is manufactured according to works instruction /sequencing into mobile/pan/drum/tank Batch label applied.
- Step 7.** Product is mixed using appropriate stirrer until uniform.
- Step 8.** Finished product is sampled and QC test . Status change when passed and labelled.
- Step 9.** Product is filled into final pack.
- Step 10.** Batch label and shipping label is scanned using comparator to ensure correct material is present vs. order requirement.
- Step 11.** Goods are packed and loaded onto despatching vehicle. Crossed checked with despatch.

# MYSTIC MOMENTS

## **Genetically modified materials or materials derived from genetically modified source**

This statement is to certify that none of the raw materials used in the fragrances supplied by Madar Corporation Limited are genetically modified materials or materials derived from a genetically modified source.

This information is given to the best of our knowledge and relies on the information provided by our suppliers.

Date: June 2021

## CERTIFICATE OF CONFORMITY WITH IFRA STANDARDS

This Certificate assesses the conformity of the fragrance mixture with IFRA Standards and provides restrictions for use! as necessary. It is based only on those materials subject to IFRA Standards for the toxicity endpoints described in each! Standard.

This Certificate does therefore not replace a comprehensive safety assessment of the fragrance mixture.

### CERTIFYING PARTY:

**Madar Corporation Limited**  
**19 -20 Sandleheath Industrial Estate**  
**Fordingbridge**  
**SP6 1PA**

### CERTIFICATE DELIVERED TO:

### SCOPE OF THE CERTIFICATE:

CHERRY

### COMPULSORY INFORMATION:

We certify that the above mixture is in compliance with the Standards of the INTERNATIONAL FRAGRANCE! ASSOCIATION (IFRA), up to and including the 49th Amendment to the IFRA Code of Practice (published January 2020),! provided it is used in the following categories at a maximum concentration level of:

IFRA Categories [see Annex 1 below for details]	Maximum Level of use (%)
IFRA Category 1	Not approved
IFRA Category 2	0.03%
IFRA Category 3	0.61%
IFRA Category 4	0.56%
IFRA Category 5A	0.14%
IFRA Category 5B	0.14%
IFRA Category 5C	0.14%
IFRA Category 5D	0.04%
IFRA Category 6	Not approved
IFRA Category 7A	1.17%
IFRA Category 7B	1.17%
IFRA Category 8	0.04%
IFRA Category 9	1.10%
IFRA Category 10A	1.10%
IFRA Category 10B	4.07%
IFRA Category 11A	0.04%
IFRA Category 11B	0.04%
IFRA Category 12	Not limited

For other kinds of application or use at higher concentration levels, a new evaluation can be needed; please contact European Flavours & Fragrances PLC

Regulatory Affairs Department

## ANNEX 1

Below is an extract of information provided by IFRA in relation to types of application present in each IFRA Category. Additional information about IFRA Categories can be found in the Guidance to IFRA Standards, issued by IFRA.

IFRA Category	Product Type
IFRA Category 1	Products applied to the lips: Lip products e.g. lipstick, lip balm; Childrens toys
IFRA Category 2	Products applied to the axillae: Deodorant and antiperspirant products of all types; Body sprays/mists
IFRA Category 3	Products applied to the face/body using fingertips: Eye products e.g. eye make-up, eye moisturizer; Facial make-up; Make-up remover; Nose pore strips; Wipes for face, neck, hands, body; Facial masks; Body and face paint
IFRA Category 4	Products related to fine fragrance: Hydroalcoholic and non-hydroalcoholic fine fragrance of all types e.g. Eau de Toilette, Parfum, Cologne, solid perfume, fragrancing cream, aftershaves of all types; Ingredients of perfume and fragrance mixtures for cosmetic kits; Scent pads; Scent strips
IFRA Category 5A	Body lotion products applied to the body using the hands (palms), primarily leave on: Foot care products e.g. creams, powders; Insect repellent for application to the skin; All powders and talc (excluding baby powders and talc)
IFRA Category 5B	Face moisturizer products applied to the face using the hands (palms), primarily leave on: Facial toner; Facial moisturizers and creams
IFRA Category 5C	Hand cream products applied to the hands using the hands (palms), primarily leave on: Hand cream; Nail care products including cuticle creams; Hand sanitizers
IFRA Category 5D	Baby creams, baby oils and baby talc: Baby cream/lotion, baby oil, baby powders and talc
IFRA Category 6	Products with oral and lip exposure: Toothpaste; Mouthwash, including breath sprays; Toothpowder, strips, mouthwash tablets
IFRA Category 7A	Rinse-off products applied to the hair with some hand contact: Hair permanent or other hair chemical treatments (rinse-off) e. g. relaxers, including rinse-off hair dyes
IFRA Category 7B	Leave-on products applied to the hair with some hand contact: Hair sprays of all types e.g. pumps, aerosol sprays; Hair styling aids non sprays e.g. mousse, leave- on conditioners; Hair permanent or other hair chemical treatments (leave-on) e.g. relaxers, including leave-on hair dyes; Shampoo - Dry (waterless shampoo); Hair deodorizer
IFRA Category 8	Products with significant anogenital exposure: Intimate wipes; Tampons; Baby wipes; Toilet paper (wet)
IFRA Category 9	Products with body and hand exposure, primarily rinse off: Bar soap; Liquid soap; Shampoo of all type; Conditioner (rinse-off); Body washes and shower gels of all types; Baby wash, bath, shampoo; Bath gels, foams, mousses, salts, oils and other products added to bathwater; Cleanser for face (rinse-off); Shaving creams of all types e.g. stick, gels, foams; All depilatories (including facial) and waxes for mechanical hair removal; Foot care products (feet are placed in a bath for soaking); Shampoos for pets
IFRA Category 10A	Household care excluding aerosol / spray products: Hand wash laundry detergent; Laundry pre-treatment of all types e.g. paste, sprays, sticks; Machine laundry detergents with skin contact e.g. liquids, powders; Fabric softeners of all types including fabric softener sheets; Ironing water; Hand



# MYSTIC MOMENTS

	dishwashing detergent; Hard surface cleaners of all types e.g. bathroom, kitchen cleansers, furniture polish; Toilet seat wipes; Household cleaning products, other types including fabric cleaners, carpet cleaners, furniture polishes sprays and wipes, stain removers, treatment products for textiles e.g. starch sprays; Floor wax; Dry cleaning kits; Fragranced oil for lamp ring, reed diffusers, pot-pourri, liquid refills for air fresheners (non-cartridge systems), etc.
IFRA Category 10B	Household aerosol/spray products: Animal sprays applied to animals; Air freshener sprays, manual, including aerosol and pump; Aerosol/spray insecticides
IFRA Category 11A	Products with intended skin contact but minimal transfer of fragrance to skin from inert substrate without UV exposure: Feminine hygiene conventional pads, liners, interlabial pads; Diapers (baby and adult); Adult incontinence pant, pad; Toilet paper (dry)
IFRA Category 11B	Products with intended skin contact but minimal transfer of fragrance to skin from inert substrate with potential UV exposure: Tights with moisturizers; Scented socks, gloves; Facial tissues (dry tissues); Napkins; Paper towels; Wheat bags; Facial masks (paper/protective) e.g. surgical masks not used as medical device; Fertilizers, solid (pellet or powder)
IFRA Category 12	Products not intended for direct skin contact, minimal or insignificant transfer to skin: Candles of all types ; Laundry detergents for machine wash with minimal skin contact (e.g. Liquid tabs, pods); Automated air fresheners and fragrancing of all types e.g. concentrated aerosol with metered doses, plug-ins, electrical, incense, liquid refills (cartridge); Air delivery systems; Cat litter; Cell phone cases; Deodorizers/maskers not intended for skin contact e.g. fabric drying machine deodorizers, carpet powders; Fuels; Insecticides e.g. mosquito coil, paper, electrical, for clothing, excluding aerosols/sprays; Joss sticks or incense sticks; Dishwash detergent and deodorizers - for machine wash; Olfactive board games; Paints; Plastic articles (excluding toys); Scratch and sniff; Scent pack; Scent delivery system (using dry air technology); Shoe polishes; Rim blocks (Toilet)

## SAFETY DATA SHEET

In accordance with REACH Regulation EC No.1907/2006!

**Product:** CHERRY

**Version:** 2

### Section 1. Identification of the substance or the mixture and of the supplier

#### 1.1 Product Identifier

**Product identifier:** CHERRY (Contains:(r)-para-Mentha-1,8-diene, Benzaldehyde, Eugenol, Linalool)!None

**Other identifiers:** 9M23-CWSV-J00W-N4MA

**Unique Formula Identifier (UFI):**

#### 1.2 Relevant identified uses of the substance of mixture and uses advised against

**Product uses:** Fragrances

#### 1.3 Details of the supplier of the safety data sheet

**Company name:** Madar Corporation Limited

**Company address:** 19 - 20 Sandleheath Industrial Estate  
Fordingbridge  
SP6 1PA

**Contact:** UK  
Regulatory Affairs

**E-Mail address:** technical@madarcorporation.co.uk

**Company phone:** +44 (0) 1425 655 555

#### 1.4 Emergency telephone number

**Emergency phone:** (+44) 111 (national)

### Section 2. Hazards identification

#### 2.1 Classification of the substance or mixture

##### **Classification under Regulation (EC) No 1272/2008**

**Class and category of danger:** Flammable Liquid, Hazard Category 3  
Acute Toxicity - Inhalation Category 4  
Skin Corrosion / Irritation Category 2  
Eye Damage / Irritation Category 2  
Sensitization - Skin Category 1  
Specific Target Organ Toxicity (Single Exposure) Category 3  
Hazardous to the Aquatic Environment - Long-term Hazard Category 2  
H226, Flammable liquid and vapour.  
H315, Causes skin irritation.  
H317, May cause an allergic skin reaction.  
H319, Causes serious eye irritation.  
H332, Harmful if inhaled.  
H335, May cause respiratory irritation.

## SAFETY DATA SHEET

In accordance with REACH Regulation EC No.1907/2006!

**Product:** CHERRY

**Version:** 2

**Class and category of danger:** H411, Toxic to aquatic life with long lasting effects.

### 2.2 Label elements

#### Classification under Regulation (EC) No 1272/2008

**Signal word:** Warning

**Hazard statements:** H226, Flammable liquid and vapour.  
H315, Causes skin irritation.  
H317, May cause an allergic skin reaction.  
H319, Causes serious eye irritation.  
H332, Harmful if inhaled.  
H335, May cause respiratory irritation.  
H411, Toxic to aquatic life with long lasting effects.

**Supplemental Information:** None

**Precautionary statements:** P210, Keep away from heat, sparks, open flames and hot surfaces. - No smoking.  
P240, Ground/bond container and receiving equipment.  
P241, Use explosion-proof electrical, ventilating and lighting equipment.  
P242, Use only non-sparking tools.  
P243, Take precautionary measures against static discharge.  
P261, Avoid breathing vapour or dust.  
P264, Wash hands and other contacted skin thoroughly after handling.  
P271, Use only outdoors or in a well-ventilated area.  
P272, Contaminated work clothing should not be allowed out of the workplace.  
P273, Avoid release to the environment.  
P280, Wear protective gloves/eye protection/face protection.  
P303/361/353, IF ON SKIN (or hair): Remove/take off immediately all contaminated clothing. Rinse skin with water/shower.  
P304/340, IF INHALED: Remove victim to fresh air and keep at rest in a position comfortable for breathing.  
P305/351/338, IF IN EYES: Rinse cautiously with water for several minutes. Remove contact lenses, if present and easy to do. Continue rinsing.  
P312, Call a POISON CENTRE or doctor/physician if you feel unwell.  
P333/313, If skin irritation or rash occurs: Get medical advice/attention.  
P337/313, If eye irritation persists: Get medical advice/attention.  
P362, Take off contaminated clothing and wash before reuse.  
P370/378, In case of fire: Use carbon dioxide, dry chemical, foam for extinction.  
P391, Collect spillage.  
P403/233/235, Store in a well-ventilated place. Keep container tightly closed. Keep cool.  
P405, Store locked up.  
P501, Dispose of contents/container to approved disposal site, in accordance with local regulations.

## SAFETY DATA SHEET

In accordance with REACH Regulation EC No.1907/2006!

**Product:** CHERRY

**Version:** 2

**Pictograms:**



**Unique Formula Identifier (UFI):** 9M23-CWSV-J00W-N4MA

### 2.3 Other hazards

**Other hazards:** None

### Section 3. Composition / information on ingredients

#### 3.2 Mixtures

**Contains:**

Name	CAS	EC	REACH Registration No.	%	Classification for (CLP) 1272/2008
Benzaldehyde	100-52-7	202-860-4	01-2119455540-44-XXXX	20-<50%	Acute Tox. 4-Acute Tox. 4-Eye Irrit. 2-STOT SE 3;H302-H319-H332-H335,-
Linalool	78-70-6	201-134-4	01-2119474016-42-XXXX	10-<20%	Skin Irrit. 2-Eye Irrit. 2-Skin Sens. 1B;H315-H317-H319,-
Ethyl butyrate	105-54-4	203-306-4	01-2120118576-54-XXXX	5-<10%	Flam. Liq. 3-Eye Irrit. 2;H226-H319,-
Ethyl heptanoate	106-30-9	203-382-9	01-2120756398-40-XXXX 01-2120104876-54-XXXX	1-<5%	Aquatic Acute 1-Aquatic Chronic 3;H400-H412,-
gamma-Undecalactone	104-67-6	203-225-4	01-2119959333-34-XXXX	1-<5%	Aquatic Chronic 3;H412,-
Benzyl Acetate	140-11-4	205-399-7	01-2119638272-42-XXXX	1-<5%	Aquatic Chronic 3;H412,-
Eugenol	97-53-0	202-589-1	01-2119971802-33-XXXX or natural source	1-<5%	Eye Irrit. 2-Skin Sens. 1B;H317-H319,-
(r)-para-Mentha-1,8-diene	5989-27-5	227-813-5	Exempt < 1 Tonne/pa or natural source	1-<5%	Flam. Liq. 3-Skin Irrit. 2-Skin Sens. 1B-Asp. Tox 1-Aquatic Acute 1-Aquatic Chronic 1;H226-H304-H315-H317-H410,-
2-Hydroxy-3-methoxybenzaldehyde	121-33-5	204-465-2	01-2119516040-60-XXXX or natural source	1-<5%	Eye Irrit. 2;H319,-
Ethyl acetate	141-78-6	205-500-4	01-2119475103-46-XXXX or natural source	1-<5%	Flam. Liq. 2-Eye Irrit. 2-STOT SE 3;H225-H319-H336,EUH066

**Substances with Community workplace exposure limits:**

## SAFETY DATA SHEET

In accordance with REACH Regulation EC No.1907/2006!

**Product:** CHERRY

**Version:** 2

Name	CAS	EC	REACH Registration No.	%	Classification for (CLP) 1272/2008
Ethyl acetate	141-78-6	205-500-4	01-2119475103-46-XXXX or natural source	1-<5%	Flam. Liq. 2-Eye Irrit. 2-STOT SE 3;H225-H319-H336,EUH066
Isoamyl acetate	123-92-2, 628-63-7	204-662-3	01-2119548408-32-XXXX	10-<20%	Flam. Liq. 3;H226, EUH066
Isoamyl butyrate	106-27-4	203-380-8	01-2120762245-55-XXXX	5-<10%	Flam. Liq. 3;H226,-
Limonene	5989-27-5, 138-86-3, 5989-54-8	205-341-0, 227-813-5, 227-815-6	Exempt < 1 Tonne/pa or natural source	1-<5%	-;-,-

**Substances that are persistent, bioaccumulative and toxic or very persistent and very bioaccumulative, greater than 0.1%:**

Not Applicable

### Section 4. First-aid measures

#### 4.1 Description of first aid measures

- Inhalation:** IF INHALED: Remove victim to fresh air and keep at rest in a position comfortable for breathing.
- Eye exposure:** IF IN EYES: Rinse cautiously with water for several minutes. Remove contact lenses, if present and easy to do. Continue rinsing.
- Skin exposure:** IF ON SKIN (or hair): Remove/take off immediately all contaminated clothing. Rinse skin with water/shower.
- Ingestion:** Rinse mouth with water and obtain medical attention.

#### 4.2 Most important symptoms and effects, both acute and delayed

- Causes skin irritation.
- May cause an allergic skin reaction.
- Causes serious eye irritation.
- Harmful if inhaled.
- May cause respiratory irritation.

#### 4.3 Indication of any immediate medical attention and special treatment needed

None expected, see Section 4.1 for further information.

### SECTION 5: Firefighting measures

#### 5.1 Extinguishing media

Suitable media: Carbon dioxide, Dry chemical, Foam.

#### 5.2 Special hazards arising from the substance or mixture

In case of fire, may be liberated: Carbon monoxide, Unidentified organic compounds.

## SAFETY DATA SHEET

In accordance with REACH Regulation EC No.1907/2006!

**Product:** CHERRY

**Version:** 2

### 5.3 Advice for fire fighters:

In case of insufficient ventilation, wear suitable respiratory equipment.

## Section 6. Accidental release measures

### 6.1 Personal precautions, protective equipment and emergency procedures:

Avoid inhalation. Avoid contact with skin and eyes. See protective measures under Section 7 and 8.

### 6.2 Environmental precautions:

Keep away from drains, surface and ground water, and soil.

### 6.3 Methods and material for containment and cleaning up:

Remove ignition sources. Provide adequate ventilation. Avoid excessive inhalation of vapours. Contain spillage immediately by use of sand or inert powder. Dispose of according to local regulations.

### 6.4 Reference to other sections:

Also refer to sections 8 and 13.

## Section 7. Handling and storage

### 7.1 Precautions for safe handling:

Keep away from heat, sparks, open flames and hot surfaces. - No smoking.

### 7.2 Conditions for safe storage, including any incompatibilities:

Ground/bond container and receiving equipment.

Use only non-sparking tools.

Take precautionary measures against static discharge.

Store in a well-ventilated place. Keep container tightly closed. Keep cool.

### 7.3 Specific end use(s):

Fragrances: Use in accordance with good manufacturing and industrial hygiene practices.

## Section 8. Exposure controls/personal protection

### 8.1 Control parameters

Workplace exposure limits:

# MYSTIC MOMENTS

## SAFETY DATA SHEET

In accordance with REACH Regulation EC No.1907/2006!

**Product:** CHERRY

**Version:** 2

Ingredient	CAS	EC	Description	Value
Ethyl acetate	141-78-6	205-500-4	UK WEL Long term ppm	200 ppm
			UK WEL Long term mgm3	730 mg/m <sup>3</sup>
			UK WEL Short term ppm	400 ppm
			UK WEL Short term mgm3	1460 mg/m <sup>3</sup>
			EU Long-term exposure limit (8-hour TWA) (ppm)	200
			EU Long-term exposure limit (8-hour TWA) (mg/m3)	734
			EU Short-term exposure limit (15-minute) (ppm)	400
			EU Short-term exposure limit (15-minute) (mg/m3)	1468
Isoamyl acetate	123-92-2, 628-63-7	204-662-3	UK WEL Long term ppm	50 ppm
			UK WEL Long term mgm3	270 mg/m <sup>3</sup>
			UK WEL Short term ppm	100 ppm
			UK WEL Short term mgm3	541 mg/m <sup>3</sup>
			EU Long-term exposure limit (8-hour TWA) (ppm)	50
			EU Long-term exposure limit (8-hour TWA) (mg/m3)	270
			EU Short-term exposure limit (15-minute) (ppm)	100
			EU Short-term exposure limit (15-minute) (mg/m3)	540
Isoamyl butyrate	106-27-4	203-380-8	UK WEL Long term ppm	150 ppm
			UK WEL Long term mgm3	724 mg/m <sup>3</sup>
			UK WEL Short term ppm	187 ppm
			UK WEL Short term mgm3	903 mg/m <sup>3</sup>

## SAFETY DATA SHEET

In accordance with REACH Regulation EC No.1907/2006!

**Product:** CHERRY

**Version:** 2

Limonene	5989-27-5, 138-86-3, 5989-54-8	205-341-0, 227-813-5, 227-815-6	German WEL Short term mgm3	112 mg/m <sup>3</sup>
			German WEL Long term mgm3	28 mg/m <sup>3</sup>

### 8.2 Exposure Controls

#### Eye / Skin Protection

Wear protective gloves/eye protection/face protection

#### Respiratory Protection

Ensure adequate and ongoing ventilation is maintained in order to prevent build up of excessive vapour and to ensure occupational exposure limits are adhered to. If appropriate, and depending on your patterns and volumes of use, the following engineering controls may be required as additional protective measures: a) Isolate mixing rooms and other areas where this material is used or openly handled. Maintain these areas under negative air pressure relative to the rest of the plant. b) Employ the use of Personal protective equipment - an approved, properly fitted respirator with organic vapour cartridges or canisters and particulate filters. c) Use local exhaust ventilation around open tanks and other open sources of potential exposures in order to avoid excessive inhalation, including places where this material is openly weighed or measured. In addition, use general dilution ventilation of the work area to eliminate or reduce possible worker exposures. d) Use closed systems for transferring and processing this material.

Also refer to Sections 2 and 7.

## Section 9. Physical and chemical properties

### 9.1 Information on basic physical and chemical properties

<b>Appearance:</b>	CLEAR TO VERY PALE YELLOW LIQUID
<b>Odour:</b>	CHARACTERISTIC
<b>Odour threshold:</b>	Not determined
<b>pH:</b>	Not determined
<b>Melting point / freezing point:</b>	Not determined
<b>Initial boiling point / range:</b>	Not determined
<b>Flash point (CC):</b>	48 °C
<b>Evaporation rate:</b>	Not determined
<b>Flammability (solid, gas):</b>	Not determined
<b>Upper/lower flammability or explosive limits:</b>	Product does not present an explosion hazard
<b>Vapour pressure:</b>	2.66070010
<b>Vapour density:</b>	Not determined
<b>Relative density:</b>	0.9500 - 0.9700
<b>Solubility(ies):</b>	Not determined
<b>Partition coefficient: n-octanol/water:</b>	Not determined
<b>Auto-ignition temperature:</b>	Not determined
<b>Decomposition temperature:</b>	Not determined
<b>Viscosity:</b>	Not determined
<b>Explosive properties:</b>	Not expected



# MYSTIC MOMENTS

## SAFETY DATA SHEET

In accordance with REACH Regulation EC No.1907/2006!

**Product:** CHERRY

**Version:** 2

**Oxidising properties:** Not expected

**9.2 Other information:** None available

### Section 10. Stability and reactivity

#### 10.1 Reactivity:

Presents no significant reactivity hazard, by itself or in contact with water.

#### 10.2 Chemical stability:

Good stability under normal storage conditions.

#### 10.3 Possibility of hazardous reactions:

Not expected under normal conditions of use.

#### 10.4 Conditions to avoid:

Avoid extreme heat.

#### 10.5 Incompatible materials:

Avoid contact with strong acids, alkalis or oxidising agents.

#### 10.6 Hazardous decomposition products:

Not expected.

### Section 11. Toxicological information

#### 11.1 Information on toxicological effects

This mixture has not been tested as a whole for health effects. The health effects have been calculated using the methods outlined in Regulation (EC) No 1272/2008 (CLP).

<b>Acute Toxicity:</b>	Acute Toxicity - Inhalation Category 4
Acute Toxicity Oral	2644
Acute Toxicity Dermal	>5000
Acute Toxicity Inhalation	3.39
<b>Skin corrosion/irritation:</b>	Skin Corrosion / Irritation Category 2
<b>Serious eye damage/irritation:</b>	Eye Damage / Irritation Category 2
<b>Respiratory or skin sensitisation:</b>	Sensitization - Skin Category 1
<b>Germ cell mutagenicity:</b>	Based on available data the classification criteria are not met.
<b>Carcinogenicity:</b>	Based on available data the classification criteria are not met.
<b>Reproductive toxicity:</b>	Based on available data the classification criteria are not met.
<b>STOT-single exposure:</b>	Specific Target Organ Toxicity (Single Exposure) Category 3
<b>STOT-repeated exposure:</b>	Based on available data the classification criteria are not met.
<b>Aspiration hazard:</b>	Based on available data the classification criteria are not met.

#### Information about hazardous ingredients in the mixture

## SAFETY DATA SHEET

In accordance with REACH Regulation EC No.1907/2006!

**Product:** CHERRY

**Version:** 2

Ingredient	CAS	EC	LD50/ATE Oral	LD50/ATE Dermal	LC50/ATE Inhalation	LC50 Route
Benzaldehyde	100-52-7	202-860-4	1430	2500	1.5	Dust/mist

Refer to Sections 2 and 3 for additional information.

### Section 12. Ecological information

#### 12.1 Toxicity:

Toxic to aquatic life with long lasting effects.

**12.2 Persistence and degradability:** Not available

**12.3 Bioaccumulative potential:** Not available

**12.4 Mobility in soil:** Not available

#### 12.5 Results of PBT and vPvB assessment:

This substance does not meet the PBT/vPvB criteria of REACH, annex XIII.

**12.6 Other adverse effects:** Not available

### Section 13. Disposal considerations

#### 13.1 Waste treatment methods:

Dispose of in accordance with local regulations. Avoid disposing into drainage systems and into the environment. Empty containers should be taken to an approved waste handling site for recycling or disposal.

### Section 14. Transport information

Transport information shown here is relevant for all transport modes, unless otherwise stated

**14.1 UN number:** UN1169

**14.2 UN Proper Shipping Name:** EXTRACTS, AROMATIC, LIQUID

**IMDG Proper Shipping Name:** EXTRACTS, AROMATIC, LIQUID ((r)-para-Mentha-1,8-diene)

**14.3 Transport hazard class(es):** 3

**Sub Risk:** -

**14.4. Packing Group:** III

**14.5 Environmental hazards:** This is classified as an environmentally hazardous substance under the UN Model Regulations. This is classified as a Marine Pollutant under the IMDG Code.

**14.6 Special precautions for user:** None additional

**14.7 Transport in bulk according to Annex II of MARPOL73/78 and the IBC Code:**

Not applicable

### Section 15. Regulatory information

#### 15.1 Safety, health and environmental regulations/legislation specific for the substance or mixture

Water Hazard Class (WGK): 2

Volatile Organic Compounds content: 80.660%

## SAFETY DATA SHEET

In accordance with REACH Regulation EC No.1907/2006!

**Product:** CHERRY

**Version:** 2

VOC Switzerland content: 6.490%

Hydrocarbon Concentration %: 2.6658%

Turkey REACH KKDIK: Dipropylene Glycol Pre-registration number: 02-0000312079-44-0000

### 15.2 Chemical Safety Assessment

A Chemical Safety Assessment has not been carried out for this product.

### Section 16. Other information

**Concentration % Limits:** EH C2=96.52% EH C3=9.31% SCI 2=70.90% EDI 2=15.13% EDI 2A=15.13% SS 1=8.69% STO-SE 3(RI)=45.25%

**Total Fractional Values:** EH C2=1.04 EH C3=10.74 SCI 2=1.41 EDI 2=6.61 EDI 2A=6.61 SS 1=11.51 STO-SE 3(RI)=2.21

### Key to revisions:

Classification under Regulation (EC) No 1272/2008

Concentration % Limits

Information about hazardous ingredients in the mixture

SECTION 3: Composition/information on ingredients

Total Fractional Values

### Key to abbreviations:

Abbreviation	Meaning
Acute Tox. 4	Acute Toxicity - Oral Category 4
Acute Tox. 4	Acute Toxicity - Inhalation Category 4
Aquatic Acute 1	Hazardous to the Aquatic Environment - Acute Hazard Category 1
Aquatic Chronic 1	Hazardous to the Aquatic Environment - Long-term Hazard Category 1
Aquatic Chronic 3	Hazardous to the Aquatic Environment - Long-term Hazard Category 3
Asp. Tox 1	Aspiration Hazard Category 1
EUH066	Repeated exposure may cause skin dryness or cracking.
Eye Irrit. 2	Eye Damage / Irritation Category 2
Flam. Liq. 2	Flammable Liquid, Hazard Category 2
Flam. Liq. 3	Flammable Liquid, Hazard Category 3
H225	Highly flammable liquid and vapour.
H226	Flammable liquid and vapour.
H302	Harmful if swallowed.
H304	May be fatal if swallowed and enters airways.
H315	Causes skin irritation.
H317	May cause an allergic skin reaction.
H319	Causes serious eye irritation.
H332	Harmful if inhaled.
H335	May cause respiratory irritation.
H336	May cause drowsiness or dizziness.
H400	Very toxic to aquatic life.

## SAFETY DATA SHEET

In accordance with REACH Regulation EC No.1907/2006!

**Product:** CHERRY

**Version:** 2

H410	Very toxic to aquatic life with long lasting effects.
H412	Harmful to aquatic life with long lasting effects.
P210	Keep away from heat, sparks, open flames and hot surfaces. - No smoking.
P233	Keep container tightly closed.
P240	Ground/bond container and receiving equipment.
P241	Use explosion-proof electrical, ventilating and lighting equipment.
P242	Use only non-sparking tools.
P243	Take precautionary measures against static discharge.
P261	Avoid breathing vapour or dust.
P264	Wash hands and other contacted skin thoroughly after handling.
P270	Do not eat, drink or smoke when using this product.
P271	Use only outdoors or in a well-ventilated area.
P272	Contaminated work clothing should not be allowed out of the workplace.
P273	Avoid release to the environment.
P280	Wear protective gloves/eye protection/face protection.
P301/310	IF SWALLOWED: Immediately call a POISON CENTER or doctor/physician.
P301/312	IF SWALLOWED: call a POISON CENTER or doctor/physician if you feel unwell.
P302/352	IF ON SKIN: Wash with plenty of soap and water.
P303/361/353	IF ON SKIN (or hair): Remove/take off immediately all contaminated clothing. Rinse skin with water/shower.
P304/340	IF INHALED: Remove victim to fresh air and keep at rest in a position comfortable for breathing.
P305/351/338	IF IN EYES: Rinse cautiously with water for several minutes. Remove contact lenses, if present and easy to do. Continue rinsing.
P312	Call a POISON CENTRE or doctor/physician if you feel unwell.
P330	Rinse mouth.
P331	Do not induce vomiting.
P333/313	If skin irritation or rash occurs: Get medical advice/attention.
P337/313	If eye irritation persists: Get medical advice/attention.
P362	Take off contaminated clothing and wash before reuse.
P363	Wash contaminated clothing before reuse.
P370/378	In case of fire: Use carbon dioxide, dry chemical, foam for extinction.
P391	Collect spillage.
P403/233/235	Store in a well-ventilated place. Keep container tightly closed. Keep cool.
P403/235	Store in a well-ventilated place. Keep cool.
P405	Store locked up.
P501	Dispose of contents/container to approved disposal site, in accordance with local regulations.
STOT SE 3	Specific Target Organ Toxicity (Single Exposure) Category 3
STOT SE 3	Specific Target Organ Toxicity (Single Exposure) Category 3
Skin Irrit. 2	Skin Corrosion / Irritation Category 2
Skin Sens. 1B	Sensitization - Skin Category 1B

The information in this safety data sheet is to the best of our knowledge true and accurate but all data, instructions, recommendations and/or suggestions are made without guarantee.

## QUALITY ASSURANCE SPECIFICATION

<b>Product:</b>	CHERRY
<b>Flash Point:</b>	48 °C
<b>Shelf Life:</b>	12 months from date of manufacture (In some cases this material can be retested to! determine quality as at date and evaluated to see if an extension can be granted. Please! note this is not an automatic guarantee of shelf life greater than 12 months). Appearance! may change with age and storage conditions.

## TEST STANDARDS

Test Type	Standard
Appearance	VERY PALE YELLOW TO YELLOW LIQUID
Relative density @ 20°C	0.9500 - 0.9700
Refractive index @ 20°C	1.4720 - 1.4920

This is a computer-generated document. No signature is required.

# MYSTIC MOMENTS

## Vegan Statement

This statement is to certify that the fragrance/flavour mixture(s) listed below;

Cherry Fragrance Oil

Is suitable for Vegan Use

All raw material/ingredients starting materials and any processing aids (if used) are 100% derived from vegan friendly Mineral, plant and petrochemical sources and do not contain any starting materials or processing aids that are derived from animals or animal products.

'The word "animal" refers to the entire Animal Kingdom; that is all vertebrates and all multi-cellular invertebrates'

Date: 04.06.2021